



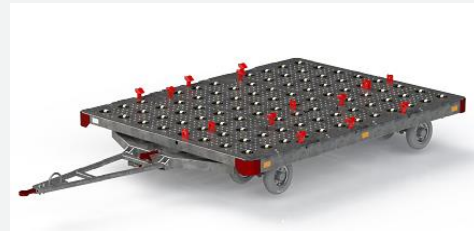
YOUR PARTNER AT THE AIRPORT

Ground Support Equipment

CT-16 10FT CARGO DOLLY

Dimensions

Maximum length	5.350 mm
Maximum width	2.656 mm
Tara Weight	1.390 kg
Max load	6.800 kg
Suitable for	LD-3, LD-4, LD-7, LD-8, LD-11, ABU/PBM, AMD/M1H,AMX,AXY



Specification

Finish	Hot dip galvanised
Turntable deck	No
Type of rollers	Castor rollers
Tow-Bar	1.604 mm
Tow-Eye diameter	Ø40 mm
Parking brake	On front wheels, activated when in upright position
Type of steering	Turntable steering , 2 wheel steering
Tyres	8
Wheel type (dia)	3.00 D / 15 x 4,5 - 8
Maximum speed (unloaded)	25 km/h
Type of loading	Wide Edge Loading
Coupling	S-P-S E-Hitch

Options

Coupling	Ringfeder, Rockinger
----------	----------------------

The specified dimensions and weight are indicative and no rights can be derived from this publication.

S-P-S International • Toekanweg 2 • 1118 EB Schiphol, The Netherlands

Phone: +31 20 354 00 63 • Fax: +31 20 6 534 780 • info@s-p-s.aero • www.s-p-s.aero