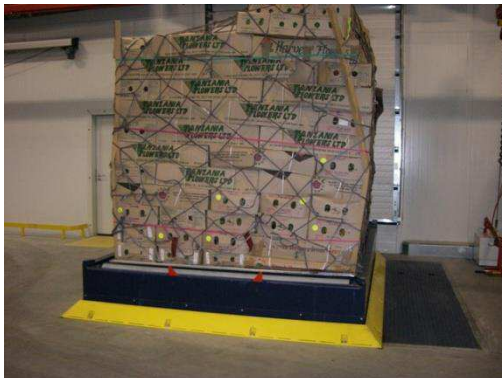


BU/BD WORKSTATION CHS435 10 ft. NEL

A BU/BD workstation CHS435 consists of a scissor lift with above a 10 ft. NEL electric driven roller deck with automatic pallet stops. Situated in a pit, the build up or break down level of an ULD is always on working height because the scissors lift can be adjusted to working height.



Dimensions l x w	: 3600 x 2700 mm
System level	: 208 / 508 mm
Stroke	: 1900 mm
Carrying velocity	: 18 m/min
Loading capacity	: 6800 kg
Electric power	: 1 x 1,1 kW
Hydraulic unit	: 7,5 kW

Options:

Weighing System 10ft; 6.800 kg (CHS495)

Surface treatment: hot dip galvanized