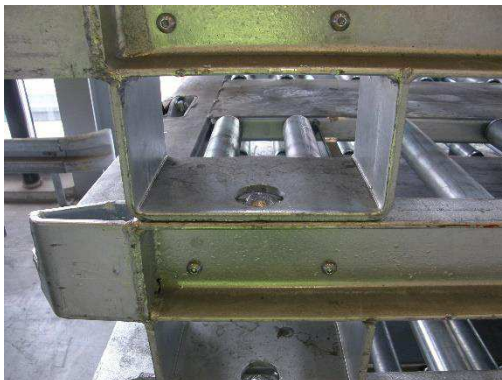


SLAVE PALLET SP-08 10 ft. NEL

The slave pallet SP-08 is a flexible transport unit consisting of a galvanised frame with non-driven conveyor rollers which makes transport possible in 2 directions. Combined with a slave master, slave pallets can be used to transport, to store and to build up or break down ULD's. Because of its flexible character, slave pallets are very suitable to expand existing systems temporarily.



Dimensions l x w	: 3280 x 2610 mm
Top of roller	: 203 mm above floor level
Weight	: 700 kg
ULD suitability	: 96" x 125"
Load direction	: NEL
Loading capacity	: 6800 kg

Options:

- Additional pallet stops
- Adaptable for Mini donkey SLM962