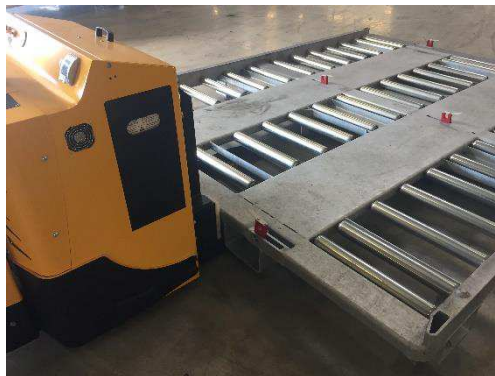
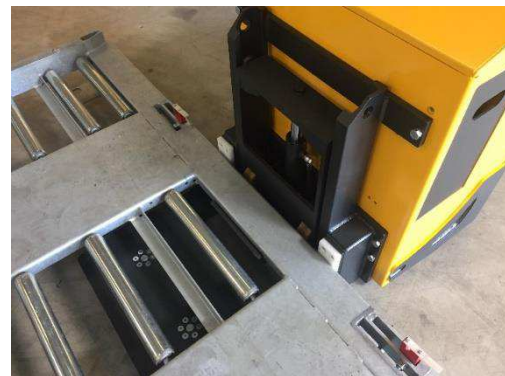


MINI DONKEY SLM962

The Mini Donkey is an electric driven transporter to move the SP08_1 type slave pallets. The operator walks along the unit during the movement of slave pallets. A very flexible and dynamic way of moving ULD's, the storage or the build up or break down of ULD's is possible on any wished location inside a warehouse.



Dimensions l x w x h	: 1419 x 862 x 865 mm
Slave pallet level	: 208 mm
Loading capacity	: 7000 kg
Travel speed	: 4 km/h
Electric power	: 2,6 + 2 kW

Options:

Drivers platform (as shown on picture)